

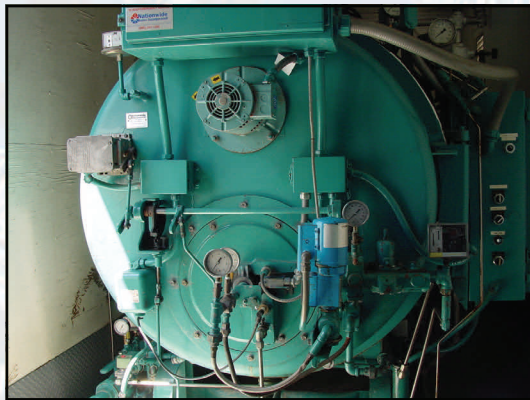


Rentals • Sales • Leasing
24/7 • (800) 227-1966

100 HP, 150 psig Mobile Boiler Room

Nationwide Boiler's 100 hp (3,450 lbs/hr) Cleaver-Brooks Mobile Boiler Room is an enclosed van unit, designed at 150 psig pressure, firing natural gas or #2 oil (LPG is optional). It is fully piped and wired and includes the following components:

- 100 hp Cleaver-Brooks Package Firetube Boiler
- Burner
- Gas Pressure Regulator
- Control Panel
- Valve Trim (Header, Safeties, Blowdown, etc.)
- Duplex Feedwater System w/ Condensate Return Tank & Preheater
- Duplex Water Softener
- Chemical Feed System
- Blowdown Separator
- Air Compressor
- Operator's Desk w/ Sample Cooler
- Interior Lighting
- Stack (loose)
- Operating Manuals



Fuel Consumption:

Natural Gas:	4,190 SCFH @ 2-10 psig
#2 Oil:	30 GPH @ 0-3 psig
LPG:	45 GPH

Connection Sizes:

Main Steam:	4"-300# FLG
Natural Gas / LPG:	2" NPT
#2 Oil Supply / Return:	¾" NPT / ¾" NPT
Blowdown / Drain:	1½" NPT
Condensate Return:	2"-150# FLG
Make-up Water:	1" NPT
Softener Drain:	¾" NPT

Electrical Power Service Requirements:

460 VAC, 3 ph, 60 hz, 25 AMPS

Dimensions & Weights:

Length:	30' 0"
Width:	8' 0"
Height:	11' 9"
Shipping Weight:	30,000 lbs
Operating Weight:	43,800 lbs

Ask About Our **Green Solutions**



42400 Christy Street / Fremont, CA 94538 / (510) 490-7100 / www.nationwideboiler.com / info@nationwideboiler.com
 True Nationwide Coverage & Beyond. Representatives Located Worldwide.

* Actual equipment may differ from listed specification. Please consult Nationwide Boiler Inc. for additional details.