

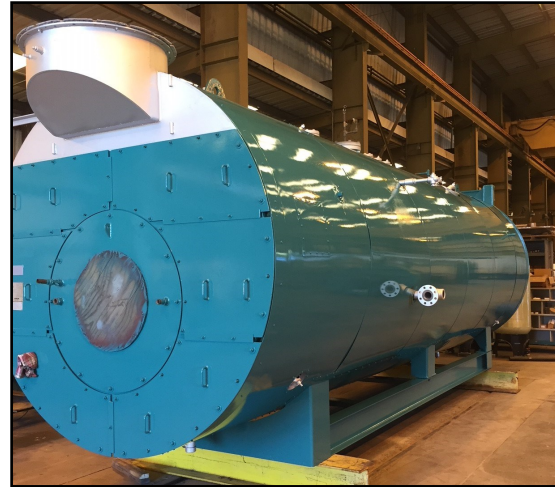
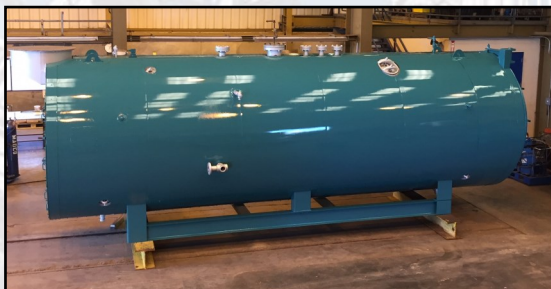


Rentals • Sales • Service
24/7 • (800) 227-1966

1200 hp Ultra Low NOx, 250 psig Skid-Mounted Firetube Boiler

Nationwide Boiler's ultra low NOx, 1200 hp (41,400 lbs/hr) skid-mounted Donlee firetube boiler is designed at 250 psig pressure, firing natural gas or propane. It is fully piped and wired and includes the following components:

- Ultra Low Nox Burner
- Forced Draft Fan, Motor & Starter
- Complete Gas Train per NFPA 8501
- Feedwater Control Valve w/ 3 Valve Bypass
- Steam Pressure Gauge
- Dual Low Water Cutoffs
- Water Column & Site Glass
- Two (2) Safety Relief Valves Set at 250 psig
- Feedwater Stop and Check Valves
- Bottom Blowdown Valves
- Continuous Blowdown Metering Valve
- NEMA 4 Control Panel w/ BMS and Siemens 353 Combustion Control
- High/low Water and Flame Failure Alarms
- Pilot System w/ Electric Ignition
- NEMA 3 Disconnect (unfused/mounted)
- Operating Manuals



Fuel Consumption:

Natural Gas: 50,500 SCFH @ 10 psig
 Propane (Air Mix): 19,870 SCFH @ 10 psig

Connection Sizes:

Main Steam: 8"-300# FLG
 Natural Gas: 3" 150# FLG
 Feedwater: 2 1/2" NPT
 Bottom Blowdown: 2" 300# FLG
 Continuous Blowdown: 1" NPT

Electrical Power Service Requirements:

460 VAC, 3 ph, 60 hz, 200 AMPS

Boiler Dimensions & Weights:

Length: 38' 4"
 Width: 15' 10" (without fan & filter)
 Height: 10' 1"
 Shipping Weight: 64,000 lbs (approx.)
 Operating Weight: 104,000 lbs (approx.)

Emissions Data (natural gas):

NOx: 30 ppm
 CO: 50 ppm

Ask About Our **Green Solutions**



42400 Christy Street / Fremont, CA 94538 / (510) 490-7100 / www.nationwideboiler.com / info@nationwideboiler.com
 True Nationwide Coverage & Beyond. Representatives Located Worldwide.

* Actual Equipment may differ from listed specification. Please consult Nationwide Boiler Inc. for additional details.